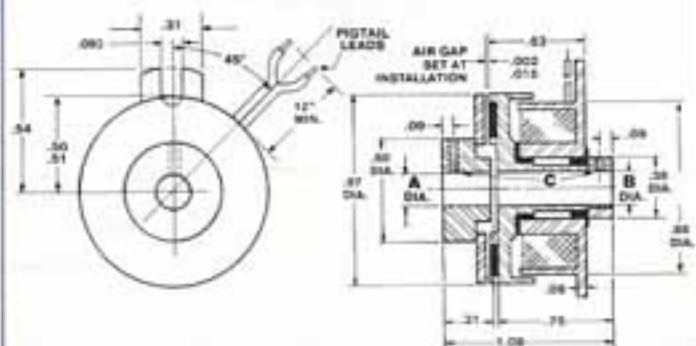
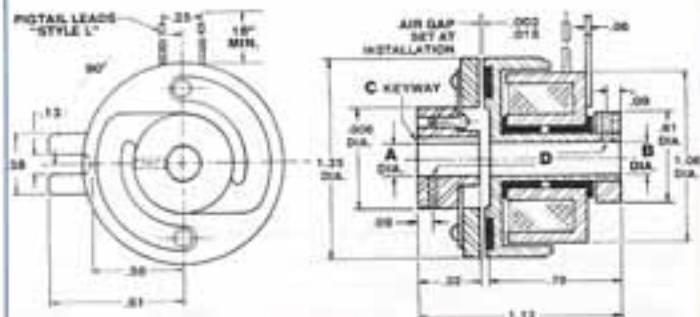


SBEC SERIES

SBEC-10CC



SBEC-12CC



MODEL NO.	A	B	C
SBEC-10CC-3	.1875 .1885	.1875 .1885	#4-40 SET SCREW
SBEC-10CC-4	.250 .251	.250 .251	#4-40 SET SCREW

SBEC-10CC NOTE:

- Rotor and armature are secured to shafts by (2) set screws (see C).

CUSTOMER SHALL MAINTAIN:

Concentricity of field mounting pilot with shafts within .003 T.I.R.
Squareness of stationary field mounting face with shafts within .003 T.I.R measured at 1.031 B.C.

MODEL NO.	A	B	C	D
SBEC-12CC-4	.250 .251	.250 .251	$\frac{1}{2} \times \frac{1}{8}$	#4-40 SET SCREW
SBEC-12CC-5	.3125 .3135	.3125 .3135	NONE	#4-40 SET SCREW

SBEC-12CC NOTE:

- Rotor shaft is secured to shaft by set screw and key (see C and D).

CUSTOMER SHALL MAINTAIN:

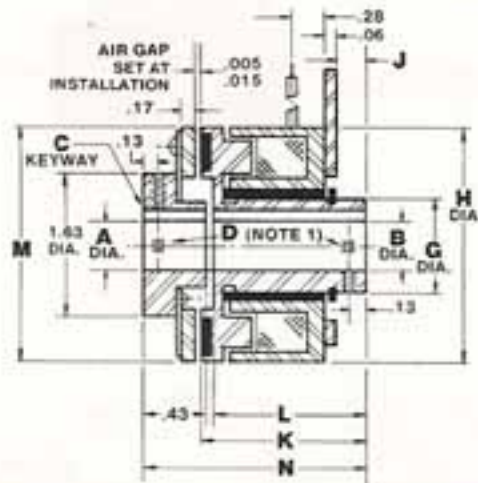
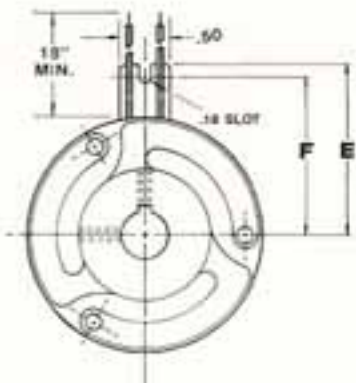
Loose pin connection into anti-rotation tab so as not to pre-load bearings.

TECHNICAL DATA

MODEL NO.	RATED STATIC TORQUE (IN-LB)	MECHANICAL					ELECTRICAL					
		WEIGHT (OZ.)			INERTIA (LB-IN ²)		RESPONSE TIME (MSEC)	LIFE AT RATED TORQUE (MILLION CYCLES)	MAXIMUM RATED SPEED (RPM)	COIL NO.	RATED VOLTAGE (VDC)	CURRENT (AMPS)
		ARMATURE ASSEMBLY	ROTOR ASSEMBLY	FIELD ASSEMBLY	ARMATURE ASSEMBLY	ROTOR ASSEMBLY						
SBEC-10CC	1	.34	.46	.75	.00112	.00198	18	5	3,000	1	90	.042
										2	24/28	.136
										3	12	.315
										4	6	.630
SBEC-12CC	5.0	.6	1.0	1.2	.0066	.0159	22	5	3,000	1	90	.053
										2	24/28	.170
										3	12	.400
										4	6	.800

SBEC SERIES

SBEC-15CC-17CC-19CC



MODEL NO.	A-B DIA.	C	D SET SCREW (2)	E	F	G DIA.	H DIA.	J	K	L	M DIA.	N
SBEC-15CC-4	.250 .251	1/32 X 1/16	#8-32	1.14	.81	.65	1.50	.24	1.10	1.04	1.50	1.50
SBEC-15CC-5	.3125 .3135	1/32 X 1/16										
SBEC-15CC-6	.375 .376	3/64 X 3/32										
SBEC-17CC-4	.250 .251	1/32 X 1/16	#6-32	1.312	1.06	.622	1.80	.19	1.20	1.08	1.75	1.59
SBEC-17CC-5	.3125 .3135	1/32 X 1/16										
SBEC-17CC-6	.375 .376	3/64 X 3/32										
SBEC-19CC-4	.250 .251	1/32 X 1/16	#8-32	1.312	1.06	.686	1.75	.27	1.28	1.16	1.91	1.65
SBEC-19CC-5	.3125 .3135	1/32 X 1/16										
SBEC-19CC-6	.375 .376	3/64 X 3/32										

SBEC-15CC-17CC-19CC NOTE:

1. Rotor and armature are secured to shafts by (4) set screws and (2) keys (see C and D).

CUSTOMER SHALL MAINTAIN:

Loose fit in 3/16 inch wide slot. Solid mounting will pre-load bearings, and shorten life of unit.
Concentricity between shafts within .003 T.I.R.
Initial setting of .005 inch gap between friction surfaces.
Initial setting of .015 inch gap between friction surfaces.

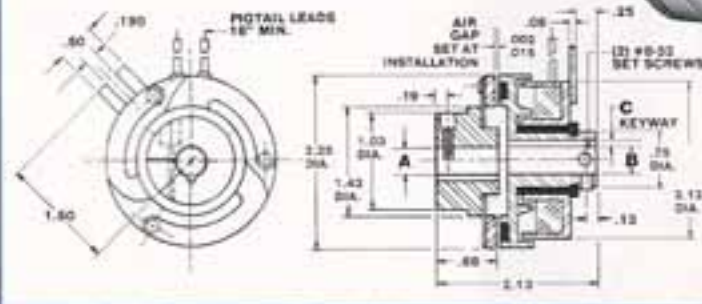
TECHNICAL DATA

MODEL NO.	RATED STATIC TORQUE (IN-LB)	MECHANICAL						ELECTRICAL					
		WEIGHT (LBS.)			INERTIA (LB-IN ²)			RESPONSE TIME (MSEC)	LIFE AT RATED TORQUE (MILLION CYCLES)	MAXIMUM RATED SPEED (RPM)	COIL NO.	RATED VOLTAGE (VDC)	CURRENT (AMPS)
		ARMATURE ASSEMBLY	ROTOR ASSEMBLY	FIELD ASSEMBLY	ARMATURE ASSEMBLY	ROTOR ASSEMBLY							
SBEC-15CC	10	.10	.13	.28	.03	.05	25	3	3,000	1	90	.06	
										2	24/28	.22	
										3	12	.37	
										4	6	.73	
SBEC-17CC	15	.12	.17	.32	.04	.07	32	3	3,000	1	90	.09	
										2	24/28	.33	
SBEC-19CC	20	.12	.18	.35	.07	.10	35	3	3,000	3	12	.66	
										4	6	1.33	

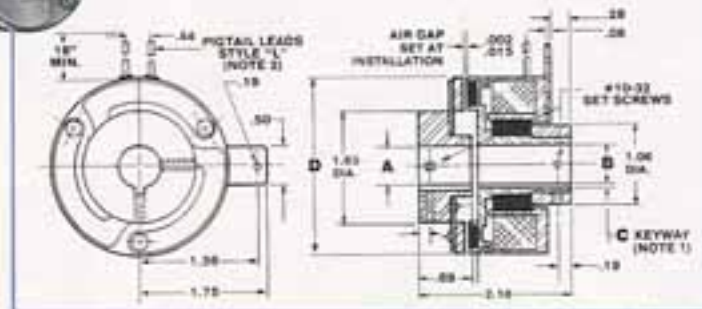
SBEC SERIES



SBEC-22CC



SBEC-26CC-30CC



MODEL NO.	A	B	C
SBEC-22CC-6	.375 .376	.375 .376	3/64 X 3/32
SBEC-22CC-8	.500 .501	.500 .501	1/16 X 1/8

SBEC-22CC NOTES:

1. Rotor is secured to shaft by (2) set screws and key (see C).
2. Armature is secured to shaft by clamp-lock split hub.

CUSTOMER SHALL MAINTAIN:

Loose fit in .190 inch wide slot. Solid mounting will pre-load bearings and shorten life of unit.
 Concentricity between shafts within .003 T.I.R.
 Initial setting of .002
 .015 inch air gap between friction surfaces.
 Concentricity between armature and rotor shaft within .003 T.I.R.

MODEL NO.	A	B	C	D
SBEC-26CC-6	.375 .376	.375 .376	3/64 X 3/32	2.63
SBEC-26CC-8	.500 .501	.500 .501	1/16 X 1/8	
SBEC-26CC-10	.625 .626	.625 .626	1/16 X 3/16	
SBEC-26CC-12	.750 .751	.750 .751	3/32 X 3/16	3.00
SBEC-30CC-6	.375 .376	.375 .376	3/64 X 3/32	
SBEC-30CC-8	.500 .501	.500 .501	1/16 X 1/8	
SBEC-30CC-10	.625 .626	.625 .626	1/16 X 3/16	
SBEC-30CC-12	.750 .751	.750 .751	3/32 X 3/16	

SBEC-26CC-30CC NOTES:

1. Rotor and armature are secured to shafts by (2) keys and (4) set screws.
2. "L" Style shown, Terminal Style also available...specify ("T" Style). "T" Style provides female threads for #4-40 screws (screws and rubber insulators are supplied when specifying "T" Style).

CUSTOMER SHALL MAINTAIN:

Concentricity between armature and rotor shaft within .003 T.I.R.
 Initial setting of .002
 .015 inch air gap between friction surfaces.
 Loose fit in 3/16 dia. hole. Solid mounting will pre-load bearings and shorten life of unit.

TECHNICAL DATA

MODEL NO.	RATED STATIC TORQUE (IN-LB)	MECHANICAL					ELECTRICAL					
		WEIGHT (LBS.)			INERTIA (LB-IN ²)		RESPONSE TIME (MSEC)	LIFE AT RATED TORQUE (MILLION CYCLES)	MAXIMUM RATED SPEED (RPM)	COIL NO.	RATED VOLTAGE (VDC)	CURRENT (AMPS)
		ARMATURE ASSEMBLY	ROTOR ASSEMBLY	FIELD ASSEMBLY	ARMATURE ASSEMBLY	ROTOR ASSEMBLY						
SBEC-22CC	35	.259	.201	.624	.202	.222	38	3	7,500	1	90	.090
										2	24/28	.253
										3	12	.668
										4	6	1.335
SBEC-26CC	75	.40	.44	1.00	.33	.30	42	3	7,500	1	90	.090
										2	24/28	.290
										3	12	.680
										4	6	1.360
SBEC-30CC	90	.52	.62	1.00	.40	.35	60	3	7,500	1	90	.120
										2	24/28	.400
										3	12	.880
										4	6	1.360