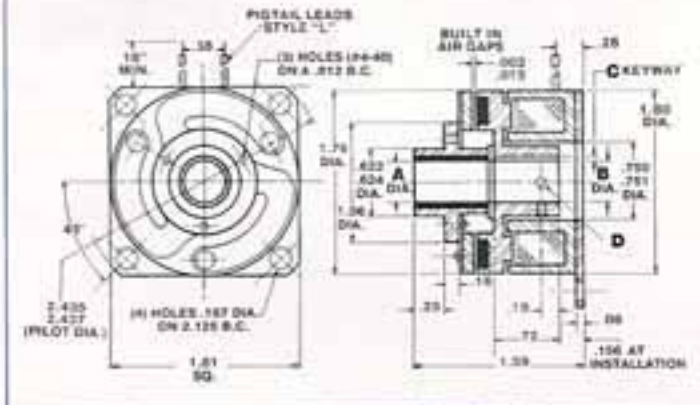


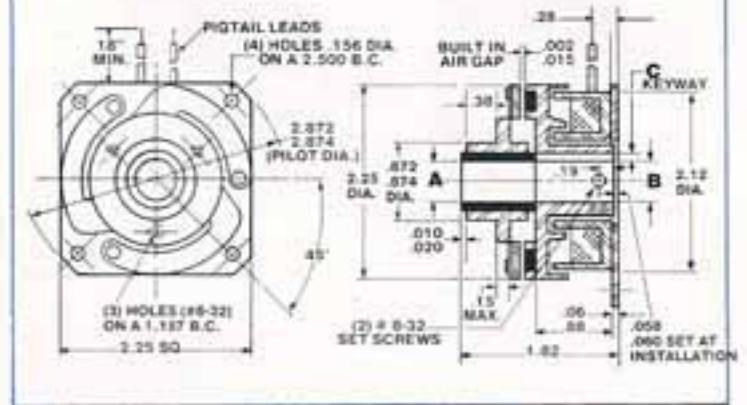




**ECA-17C**



**ECA-22C**



MODEL NO.	A	B	C	D
ECA-17C-4	.250 .251	.250 .251	1/32 X 1/16	#6-32 SET SCREW
ECA-17C-5	.3125 .3135	.312 .313	1/32 X 1/16	#6-32 SET SCREW
ECA-17C-6	.375 .376	.375 .376	3/64 X 3/32	#6-32 SET SCREW

MODEL NO.	A	B	C
ECA-22C-6	.375 .376	.375 .376	3/64 X 3/32
ECA-22C-8	.500 .501	.500 .501	1/16 X 1/8

**ECA-17C NOTE:**

1. Rotor hub is secured by (2) set screws and key (see C and D).

**CUSTOMER SHALL MAINTAIN:**

Field assembly pilot diameter to be concentric with shaft within .005 T.I.R.

Surface of pilot mounting to be square with shaft within .003 T.I.R. measured at 2.125 B.C.

**ECA-22C NOTE:**

1. Rotor is secured to shaft by (2) set screws and key (see C).

**CUSTOMER SHALL MAINTAIN:**

Concentricity of field mounting pilot diameter with rotor mounting shaft within .005 T.I.R.

Squareness of field mounting face with shaft .003 T.I.R.

**TECHNICAL DATA**

MODEL NO.	RATED STATIC TORQUE (IN-LB)	MECHANICAL					ELECTRICAL					
		WEIGHT (LBS.)			INERTIA (LB-IN <sup>2</sup> )		RESPONSE TIME (MSEC)	LIFE AT RATED TORQUE (MILLION CYCLES)	MAXIMUM RATED SPEED (RPM)	COIL NO.	RATED VOLTAGE (VDC)	CURRENT (AMPS)
		ARMATURE ASSEMBLY	ROTOR ASSEMBLY	FIELD ASSEMBLY	ARMATURE ASSEMBLY	ROTOR ASSEMBLY						
ECA-17C	15	.117	.163	.248	.068	.0526	32	3	10,000	1	90	.077
										2	24/28	.250
										3	12	.582
										4	6	1.200
ECA-22C	35	.258	.250	.450	.199	.220	38	3	7,500	1	90	.090
										2	24/28	.253
										3	12	.668
										4	6	1.335

